

**3M** Science.  
Applied to Life.™

  
citydentalsupplies



**Filtek™**  
**Supreme XTE**  
Universal Restorative

**8 shades.**  
**Infinite possibilities.**

# Create natural-looking restorations using just one opacity.

**Yes, one natural-looking shade.  
But which shade?**

Filtek™ Supreme XTE Universal Restorative is known around the globe for its wide range of beautiful shades and opacities. It's an aesthetic dentist's dream. But if you value simplicity, do you ever feel like you're choosing between too much of a good thing?

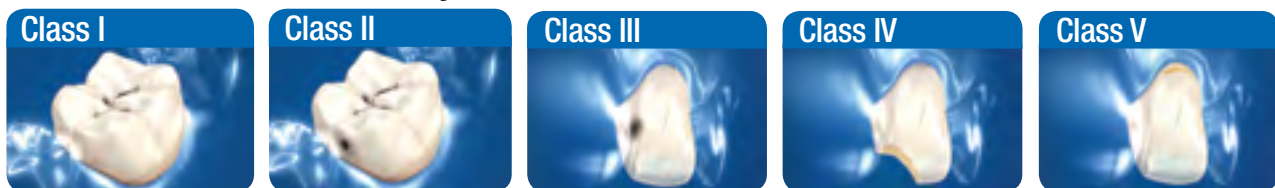
Then get ready for simplified shade selection—  
and unlimited possibilities.

Research\* shows that clinicians tend to select 8 shades for the majority of their restorative needs—in all classes. When you choose from these 8 go-to shades, you're getting a simplified selection for a single-shade technique—with all the benefits of Filtek Supreme XTE restorative. What's more, a simple shade selection means a simple inventory, too.



**Filtek™  
Supreme XTE**  
Universal Restorative

**Clinicians tend to select 8 Body shades for most of their restorative needs, in all classes.**



For simple aesthetics,  
choose from **8** must-have Body shades ...  
from your must-have brand.



**All 8 shades available in  
syringe or capsule delivery**

\*3M data on file

# The 8 selected shades match the VITA® classical Shade Guide, making aesthetics beautifully predictable.

## Restorations will blend easily with your patients' natural tooth colour.

Dentists have told us they love how Filtek Supreme XTE restorative handles, and how it blends so naturally with surrounding dentition. It's truly possible to create exceptionally natural-looking restorations using just one Body shade.

With 3M's "true" nanotechnology, you can have confidence your restoration will last:

- Outstanding strength for anterior and posterior use\*
- Excellent wear resistance\*
- Excellent polish and polish retention\*

One composite really CAN do it all.

### Filtek Supreme XTE Universal Restorative:

It's a smart choice—now it's an easy choice, too.

### Filtek™ Supreme XTE Body Shades

A1B 

A2B 

A3B 

A3.5B 

B1B 

B2B 

C1B 

C2B 



We put the **simple** into your restorative technique.

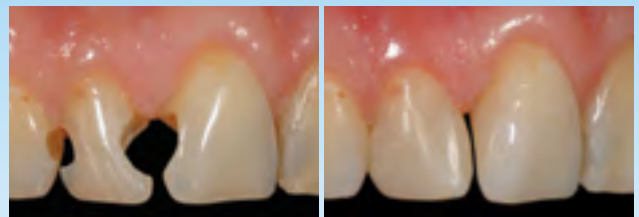
## Posterior



Simple 1-shade restoration created with the A3B Body shade of Filtek™ Supreme XTE Universal Restorative.

Clinical photos courtesy of Dr. Margeas, U.S.A.

## Anterior



Simple aesthetic 1-shade restoration using Filtek™ Supreme XTE Universal Restorative.

Clinical photos courtesy of Dr. Rafal Medzin, Poland.

# Take aesthetics to the next level with a dual-shade technique. It's simpler than you might think.

You may already know the benefits of working with Filtek™ Supreme XTE Universal Restorative. What you may not know is how easy it is to move from a single-shade to a dual-shade technique.

Filtek Supreme XTE restorative syringes and capsules are colour-coded by opacity and have bold lettering for fast, accurate selection. Plus, 3M Oral Care has many resources to guide you, like an interactive shade selector wheel, step-by-step technique cards, brochure and videos. Find them at: [www.filteksupremexite.com.au](http://www.filteksupremexite.com.au) under the Downloads & Resources tab or ask your 3M Oral Care Product Specialist.



## Ordering Information

Although Filtek Supreme XTE Universal Restorative is available in 36 shades and opacities, the **8 Body shades** highlighted below will meet the majority of your needs for creating natural-looking, single-shade restorations.

### REFILLS—Filtek™ Supreme XTE Universal Restorative

BODY SHADES	SYRINGE	CAPSULE
A1B	5914A1B	5915A1B
A2B	5914A2B	5915A2B
A3B	5914A3B	5915A3B
A3.5B	5914A3.5B	5915A3.5B
B1B	5914B1B	5915B1B
B2B	5914B2B	5915B2B
C1B	5914C1B	5915C1B
C2B	5914C2B	5915C2B
A4B	5914A4B	5915A4B
A6B	5914A6B	5915A6B
B3B	5914B3B	5915B3B
B5B	5914B5B	5915B5B
C3B	5914C3B	5915C3B
D2B	5914D2B	5915D2B
D3B	5914D3B	5915D3B
White	5914WB	5915WB
Extra White	5914XWB	5915XWB

DENTIN SHADES	SYRINGE	CAPSULE
A1D	5914A1D	5915A1D
A2D	5914A2D	5915A2D
A3D	5914A3D	5915A3D
A4D	5914A4D	5915A4D
B3D	5914B3D	5915B3D
C4D	5914C4D	5915C4D
White	5914WD	5915WD
ENAMEL SHADES	SYRINGE	CAPSULE
A1E	5914A1E	5915A1E
A2E	5914A2E	5915A2E
A3E	5914A3E	5915A3E
B1E	5914B1E	5915B1E
B2E	5914B2E	5915B2E
D2E	5914D2E	5915D2E
White	5914WE	5915WE
Extra White	5914XWE	5915XWE
TRANSLUCENT SHADES	SYRINGE	CAPSULE
Clear	5914CT	5915CT
Blue	5914BT	5915BT
Grey	5914GT	5915GT
Amber	5914AT	5915AT

**SYRINGE SHADE REFILLS:** include 1 – 4g syringe; Instructions for Use.  
**CAPSULE SHADE REFILLS:** Dentin, Enamel and Translucent Shade Refills include 10 – 0.2g capsules; Body Shade Refills include 20 – 0.2g capsules; Instructions for Use.



**3M Oral Care**  
 3M Australia Pty Limited.  
 Building A, 1 Rivett Rd  
 North Ryde NSW 2113  
[www.3M.com.au](http://www.3M.com.au)

3M New Zealand Limited.  
 94 Apollo Drive  
 Rosedale Auckland 0632  
[www.3M.co.nz](http://www.3M.co.nz)



3M and Filtek are trademarks of 3M. © 3M 2016.  
 All rights reserved. For best results, please refer to IFU.  
 Please recycle. Printed in Australia.